

# BRAUNSTON BUILDING

410 NEWPORT WAY NW  
ISSAQUAH, WASHINGTON 98027

**OFFICE FOR LEASE**



**CUSHMAN &  
WAKEFIELD**

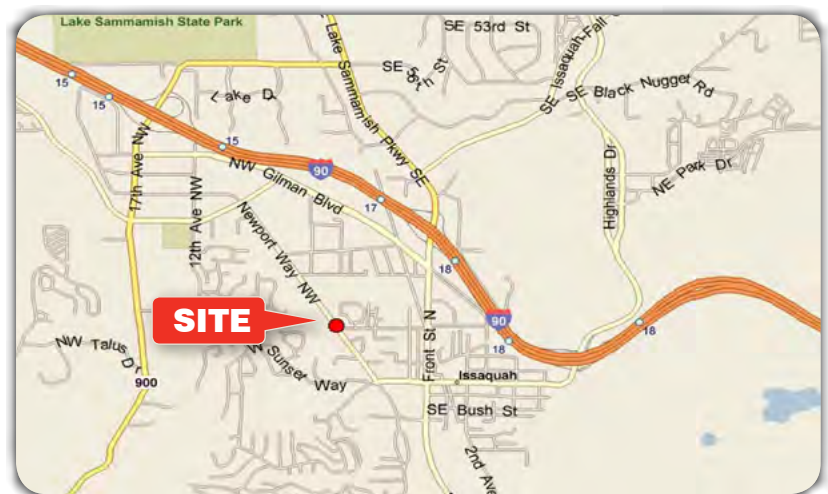
**COMMERCE**  
REAL ESTATE SOLUTIONS • COMRE.COM  
INDEPENDENTLY OWNED AND OPERATED

[Click here for Virtual Tour](#)



## PROPERTY FEATURES

- 1,050 rsf
- Available September 1, 2015
- New construction
- High end improvements
- Custom built-in desks
- Fully wired with Cat-5A cabling
- Monument signage on Newport Way



For more information, please contact:

**BRIAN TOY**

Director

(425) 455 1224

[brian.toy@comre.com](mailto:brian.toy@comre.com)

CUSHMAN & WAKEFIELD | COMMERCE

10500 NE 8<sup>th</sup> Street, Suite 1125

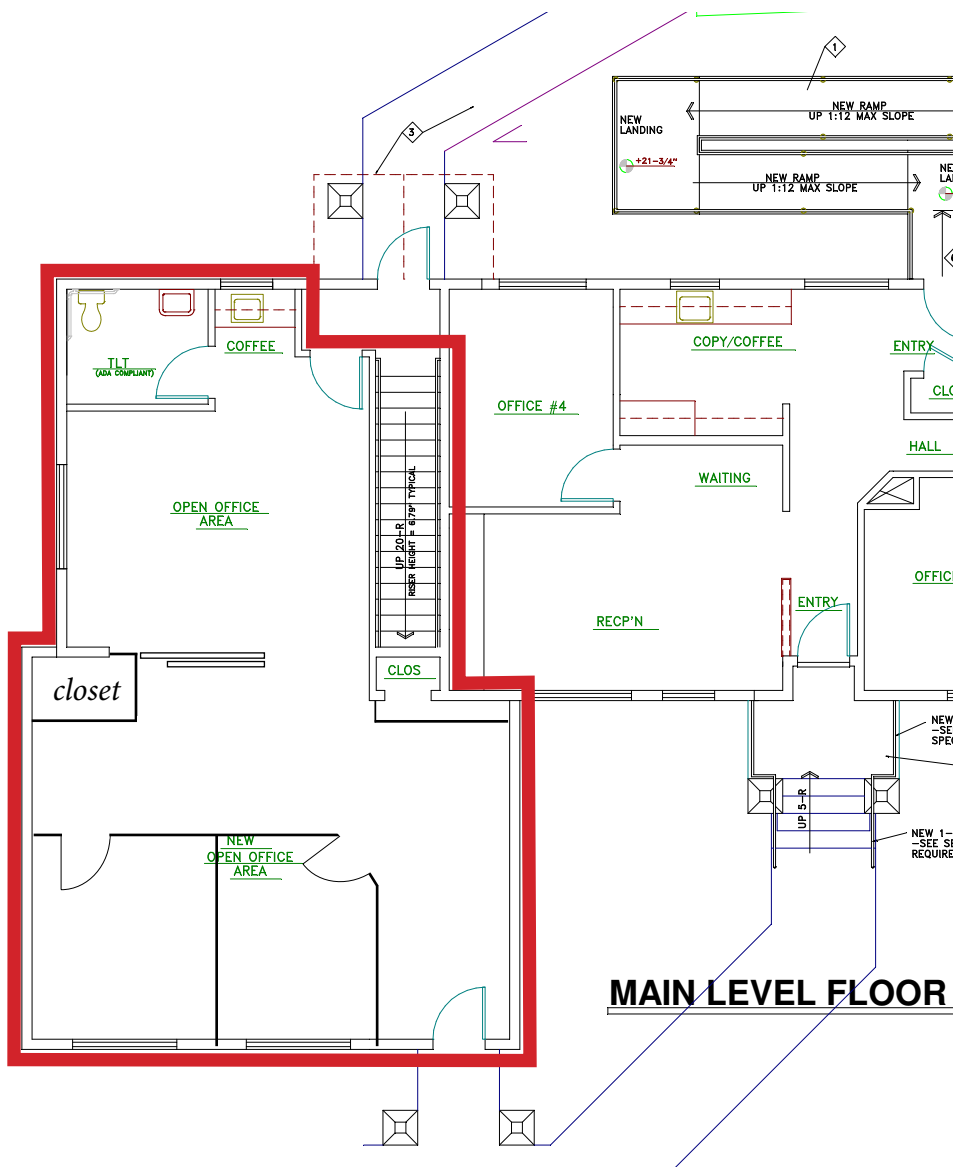
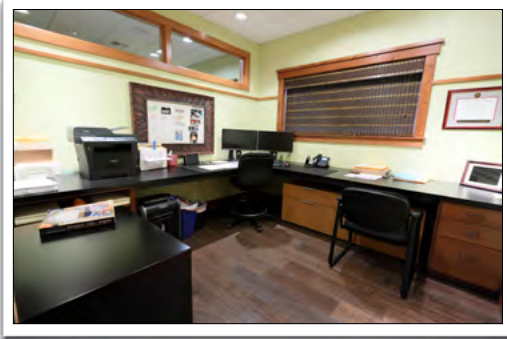
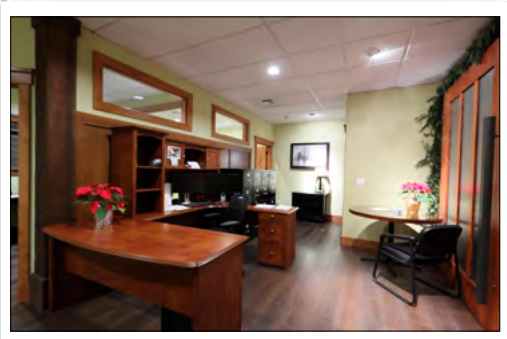
Bellevue, Washington 98004

(425) 455 4500

[www.comre.com](http://www.comre.com)

©2015, Commerce Real Estate Solutions. Disclaimer: The above information is given with the obligation that all negotiations relating to the purchase, renting, or leasing of the property described above shall be conducted through Commerce Real Estate Solutions. No warranty or representation, express or implied, is made as to the accuracy of the information contained herein, and same is submitted subject to errors, omissions, change of price, rental or other encumbrances, withdrawal without notice, and to any special listing conditions imposed by the seller. Prospective buyers should conduct their own due diligence. Some aerial photography by DigitalGlobe or Aerials Express.

**Suite C • 1,050 SF**



For more information, please contact:

**BRIAN TOY**  
 Director  
 (425) 455 1224  
 brian.toy@comre.com

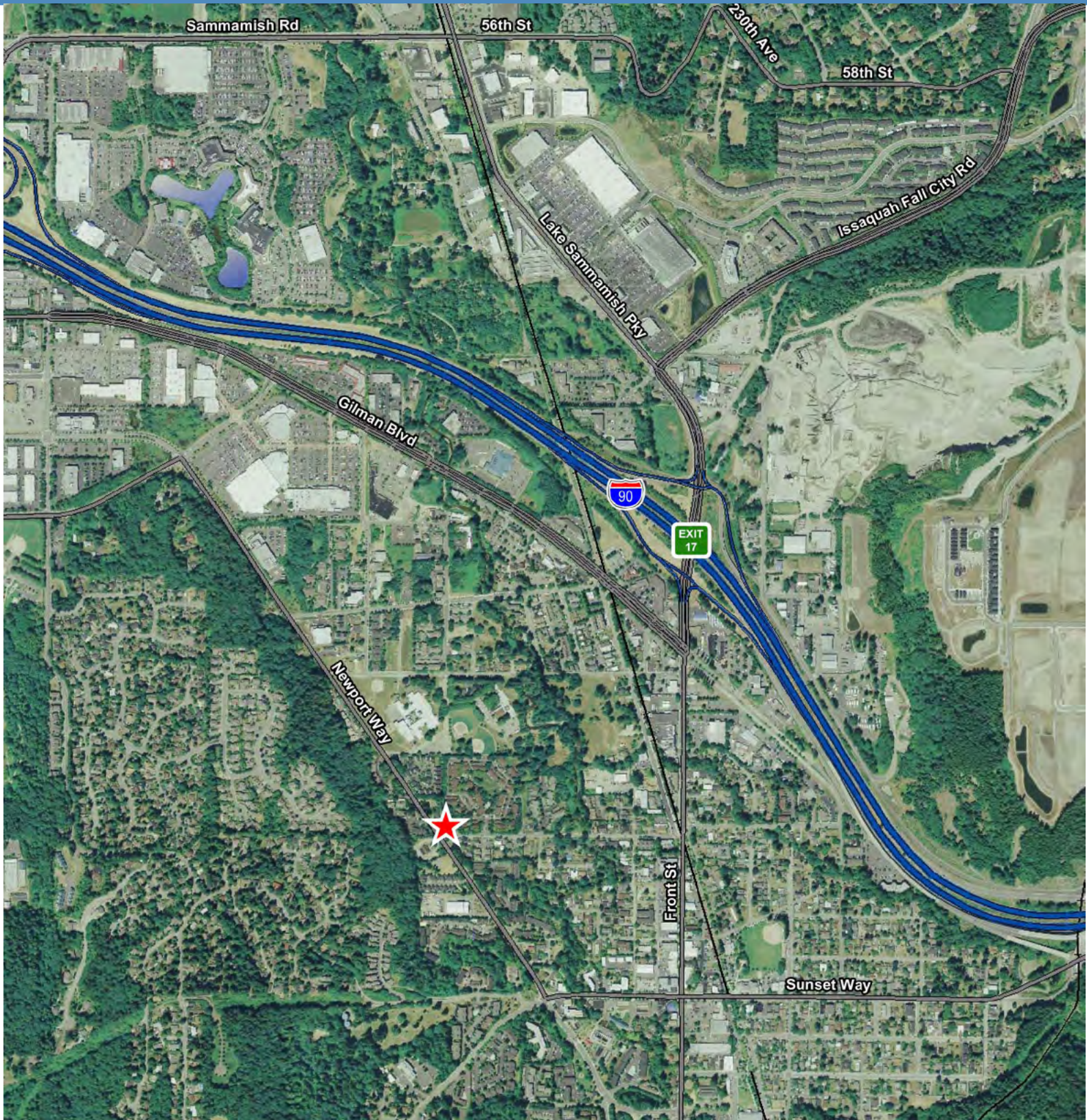
**CUSHMAN & WAKEFIELD | COMMERCE**  
 10500 NE 8<sup>th</sup> Street, Suite 1125  
 Bellevue, Washington 98004  
 (425) 455 4500  
 www.comre.com



# BRAUNSTON BUILDING

410 Newport Way NW, Issaquah, WA 98027

OFFICE FOR LEASE



For more information, please contact:

**BRIAN TOY**

Director

(425) 455 1224

[brian.toy@comre.com](mailto:brian.toy@comre.com)

CUSHMAN & WAKEFIELD | COMMERCE

10500 NE 8<sup>th</sup> Street, Suite 1125

Bellevue, Washington 98004

(425) 455 4500

[www.comre.com](http://www.comre.com)

©2013, Commerce Real Estate Solutions. Disclaimer: The above information is given with the obligation that all negotiations relating to the purchase, renting, or leasing of the property described above shall be conducted through Commerce Real Estate Solutions. No warranty or representation, express or implied, is made as to the accuracy of the information contained herein, and same is submitted subject to errors, omissions, change of price, rental or other encumbrances, withdrawal without notice, and to any special listing conditions imposed by the seller. Prospective buyers should conduct their own due diligence. Some aerial photography by DigitalGlobe or Aerials Express.  
path:



**FACT SHEET**

- Rental Rate: \$25.00/SF, NNN
- Operating Expenses: \$7.00/sf (2015 estimate)
- Year Built: 2008
- Parking: 3/1,000 SF (14 stalls including handicap)
- Access: Multiple routes to I-90 access points (see aerial)
- HVAC: New heat pump system servicing each office separately
- Telecommunications:
- Qwest and Comcast available
  - Wired with Cat-5A cabling
- Signage:
- Monument signage installed on Newport Way NW
  - 14,400 cars per day



- Security: Wired for security system  
(service activated and paid separately by tenant)

For more information, please contact:

**BRIAN TOY**  
Director  
(425) 455 1224  
brian.toy@comre.com

**CUSHMAN & WAKEFIELD | COMMERCE**  
10500 NE 8<sup>th</sup> Street, Suite 1125  
Bellevue, Washington 98004  
(425) 455 4500  
www.comre.com